

MASK4C-BL

4.25" design two-way loudspeaker with Clickmount system



The MASK4C low impedance loudspeaker has a unique design and delivers a crystal clear sound for all music applications and projects. The cabinet is made of high quality enforced PP4 ABS, with an aluminium grill. The design of the MASK4C ensures high quality and long lasting performance in indoor and outdoor use, even under extreme weather conditions. The MASK4C has a powerful 4.25" coated paper cone woofer and a 1" silk dome tweeter which results in a high SPL and extremely low distortion.

This ensures an unprecedented clarity over the whole frequency spectrum. The built-in Apart 3-step protection and the high-quality components make the MASK4C an ultra-reliable, fail safe loudspeaker even at high power loads. Thanks to the revolutionary design of the ClickMount bracket, the MASK4C is without a doubt the fastest and most installer friendly loudspeaker to-date. The pre-defined clicks on the ClickMount ensure a perfect alignment for every loudspeaker. With the discrete cable management system, integrated spirit level and in/out connectors, the full cabling is done on the bracket. To complete the installation simply click the loudspeaker on the ClickMount!

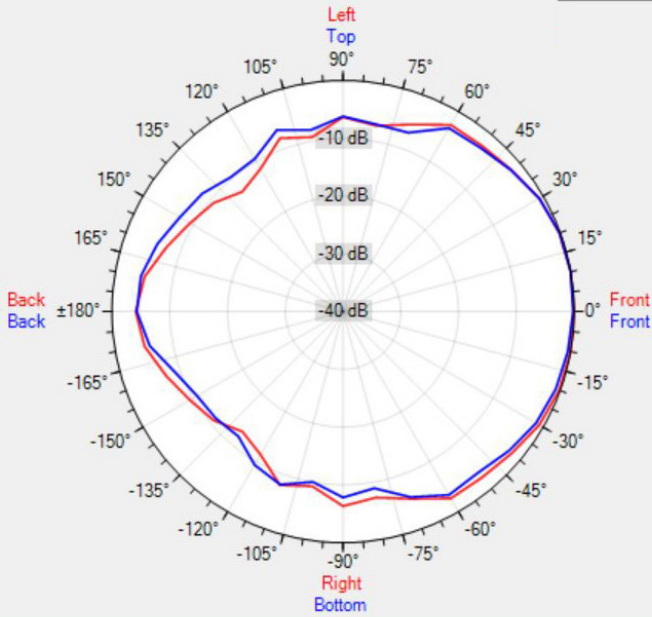
TECHNICAL SPECIFICATIONS

height in mm	238	width in mm	144
depth in mm	144	loudspeaker system	2-way
woofer size in inch	4,25	woofer cone material	coated paper
tweeter size in inch	1	mounting system	clickmount
colour	black / white	impedance (ohms)	8
low impedance dynamic power in watts	70	low impedance RMS power in watts	50
SPL 1W/1m in dB	92	max SPL 1m in dB	104
frequency response in Hz	80 - 20k	main construction material	ABS plastic
grille main material	aluminium	IP rating	64
Horizontal dispersion angle 1000 Hz	180°	Vertical dispersion angle 1000 Hz	180°
closest RAL colour (subject to deviations)	RAL9016 (W) / RAL9011 (BL)	Net weight product (kg)	1.6

POLAR PLOTS

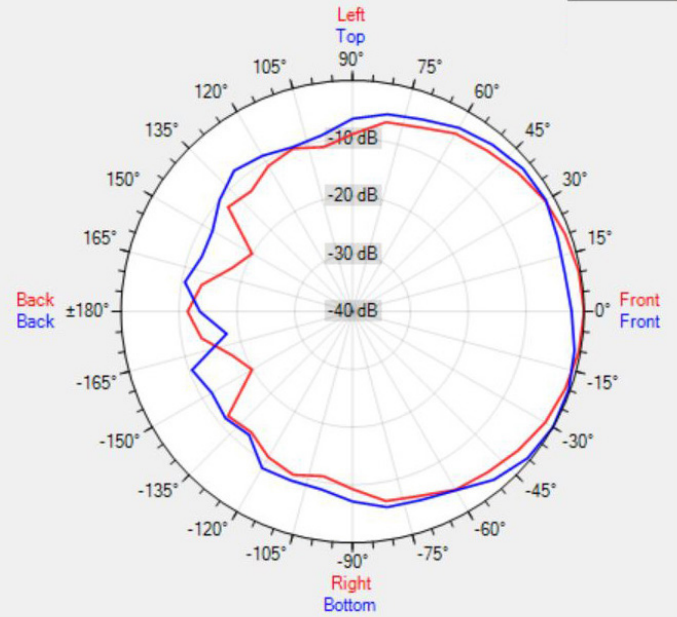
Data Shown: MASK4C (Apart Audio)
Display Parameters: Frequency: 1000Hz (1/24th Octave)

Horizontal
Vertical



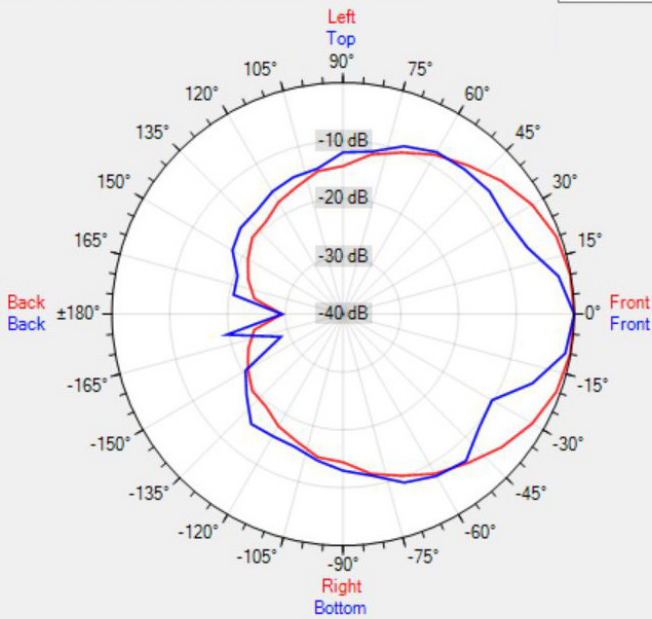
Data Shown: MASK4C (Apart Audio)
Display Parameters: Frequency: 2000Hz (1/24th Octave)

Horizontal
Vertical



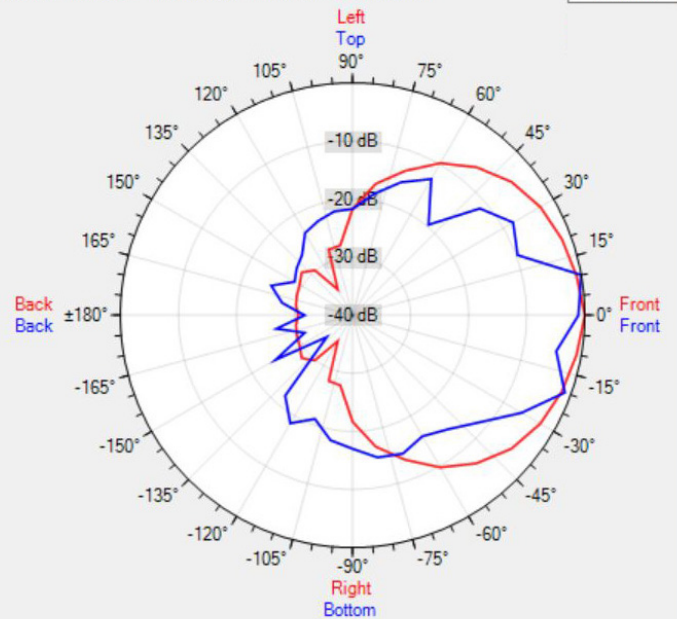
Data Shown: MASK4C (Apart Audio)
Display Parameters: Frequency: 4000Hz (1/24th Octave)

Horizontal
Vertical

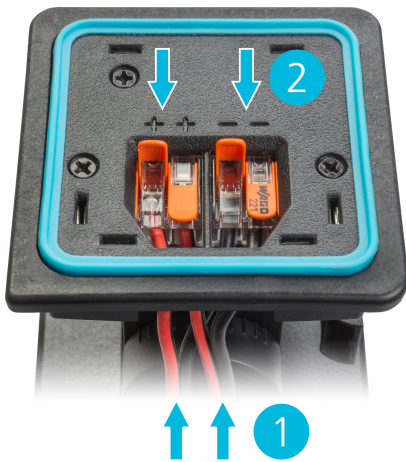


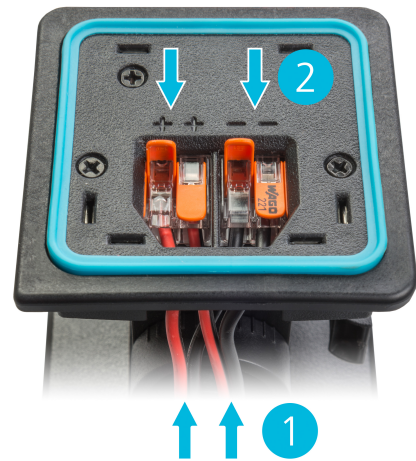
Data Shown: MASK4C (Apart Audio)
Display Parameters: Frequency: 8000Hz (1/24th Octave)

Horizontal
Vertical



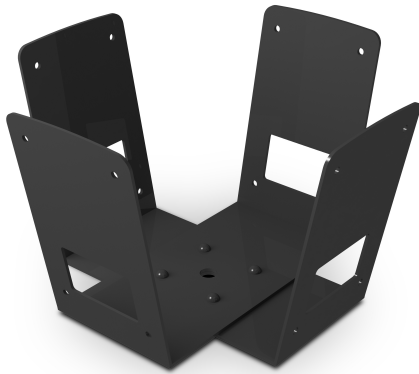
MORE PICTURES







ACCESSORIES



MASKCW-BL

Double V-shaped cluster bracket for MASK4C(T)-BL/MASK6C(T)-B



MASKCV-BL

V-shaped 2-way cluster bracket for MASK4C(T)-BL/MASK6C(T)-BL



MASKCL-BL

L-shaped side bracket for MASK4C(T)-BL / MASK6C(T)-BL