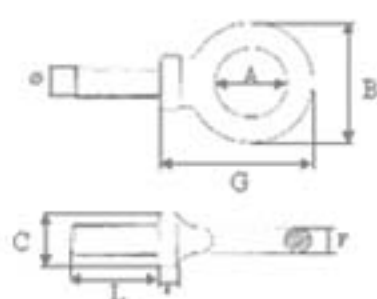


ANNEAUX DE LEVAGE

ANNEAUX DE LEVAGE MALES LONGS

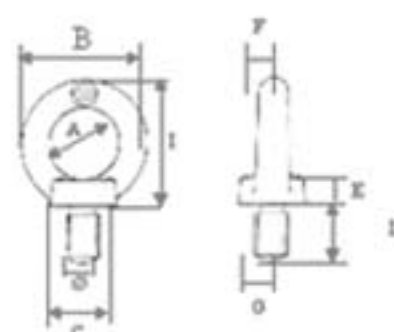


Ref Noir	Ref Galva	∅ mm	A mm	B mm	C mm	L mm	CMU kg	Poids kg
ALMAL 008	ALMAG 008	8	20	36	20.5	24	150	0.060
ALMAL 010	ALMAG 010	10	23	44	22.5	28.5	250	0.100
ALMAL 012	ALMAG 012	12	29	50	22.5	40	400	0.140
ALMAL 014	ALMAG 014	14	33	57	26	40	630	0.200
ALMAL 016	ALMAG 016	16	37	65	28	50	800	0.320
ALMAL 018	ALMAG 018	18	41	71	31	52	1000	0.420
ALMAL 020	ALMAG 020	20	46	78	32	55	1250	0.520
ALMAL 022	ALMAG 022	22	50	84	35	62	1600	0.638
ALMAL 024	ALMAG 024	24	53	94	38	67	2000	0.920
ALMAL 027	ALMAG 027	27	59	101	40	74	2500	1.160
ALMAL 030	ALMAG 030	30	60	109	45.5	79	3150	1.660

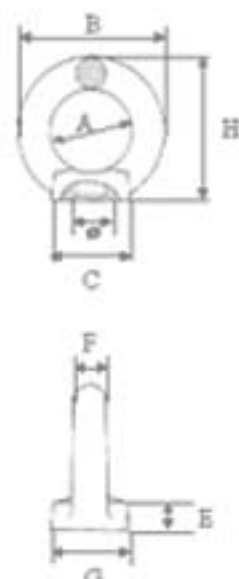


Reference Noir	Reference Galva	Prix H.T. €	∅ mm	L mm	A mm	CM U kg	B mm	C mm	E mm	F mm	G mm	CM U 45°	Poids kg
ALMAN 048	ALMAG108	029	8	13	20	140	36	20	6	8	10	95	0060
ALMAN 050	ALMAG110	041	10	17	25	230	45	25	8	10	12	170	0110
ALMAN 052	ALMAG112	056	12	20.5	30	340	54	30	10	12	14	240	0170
ALMAN 054	ALMAG114	058	14	20.5	30	500	54	30	10	12	14	350	0170
ALMAN 056	ALMAG116	078	16	27	35	700	63	35	12	14	16	500	0310
ALMAN 058	ALMAG118	079	18	27	35	930	63	35	12	14	16	650	0480
ALMAN 060	ALMAG170	117	20	30	40	1200	72	40	14	16	19	830	0480
ALMAN 064	ALMAG174	227	24	36	50	1800	90	50	18	20	24	1270	0900

ANNEAUX DE LEVAGE MALES DIN 580



ANNEAUX DE LEVAGE FEMELLES DIN 582



Ref Noir	∅ mm	A mm	B mm	C mm	E mm	F mm	G mm	H mm	CMU kg	CMU 45°	Poids kg
ALFEM 008	8	20	36	20	8.5	8	10	36	140	95	0.060
ALFEM 010	10	25	45	25	10	10	12	45	230	170	0.100
ALFEM 012	12	30	54	30	11	12	14	53	340	240	0.170
ALFEM 014	14	30	54	30	11	12	14	53	500	350	0.150
ALFEM 016	16	35	63	35	13	14	16	62	700	500	0.260
ALFEM 018	18	35	63	35	13	14	16	62	830	650	0.240
ALFEM 020	20	40	72	40	16	16	19	71	1200	830	0.410
ALFEM 024	24	50	90	50	20	20	24	90	1800	1270	0.750
Ref Galva	∅ mm	A mm	B mm	C mm	E mm	F mm	G mm	H mm	CMU kg	CMU 45°	Poids kg
ALFEM 158	8	20	36	20	8.5	8	10	36	140	95	0.060
ALFEM 160	10	25	45	25	10	10	12	45	230	170	0.100
ALFEM 162	12	30	54	30	11	12	14	53	340	240	0.170
ALFEM 164	14	30	54	30	11	12	14	53	500	350	0.150
ALFEM 166	16	35	63	35	13	14	16	62	700	500	0.260
ALFEM 168	18	35	63	35	13	14	16	62	830	650	0.240
ALFEM 170	20	40	72	40	16	16	19	71	1200	830	0.410
ALFEM 174	24	50	90	50	20	20	24	90	1800	1270	0.750

